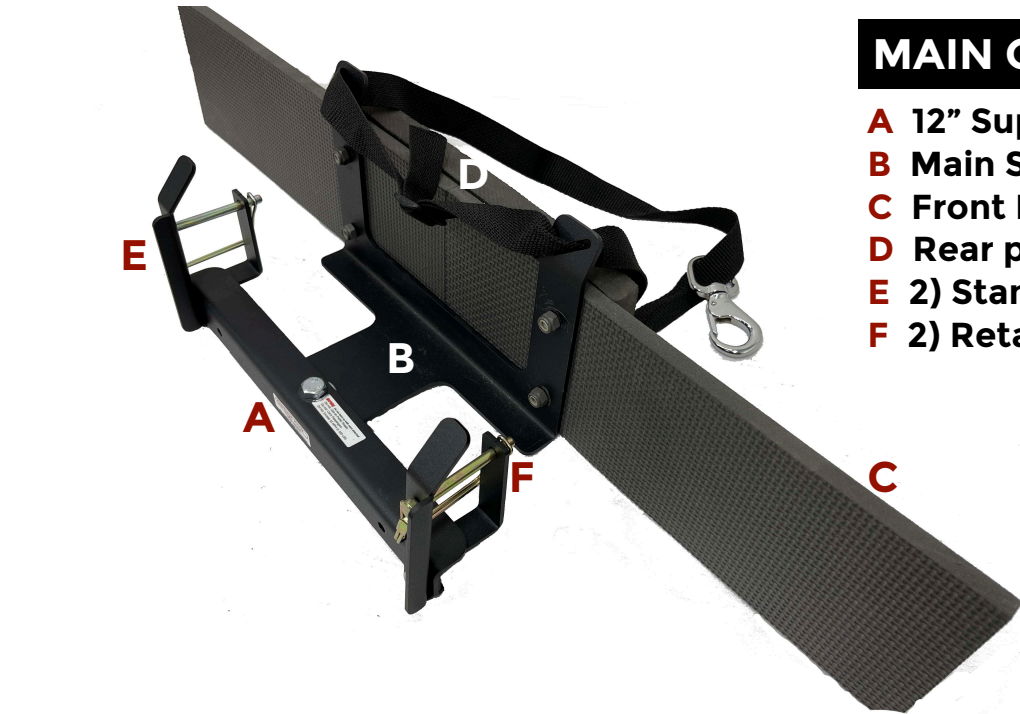


BUMPER HOOK MT Installation Instructions v.5.2

Tools needed: 2) 7/16" and 2) 9/16" either sockets or open end wrenches



MAIN COMPONENTS

- A 12" Support Arm
- B Main Support Base
- C Front Pad
- D Rear pad
- E 2) Standard Hooks
- F 2) Retainer Brackets

FASTENERS

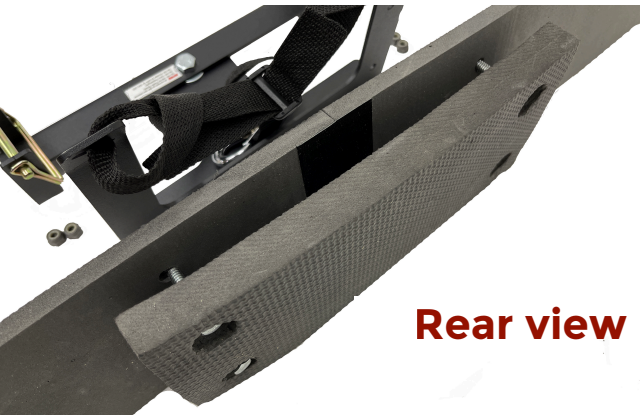
- G 2) Zip ties
- H 4) 1/4"x1-1/4" bolts, washer and lock nuts
- I 2) 1/4" x 3/4" bolts, nuts and lock washers
- J 3/8" x 1" bolt, washer and lock nut
- K 2) 2" PTO Spring Clips



Scan for
BH-MT Installation
Video >

Step 1

- Bolt the rear pad and front pad to the main support Base and arm from the rear of base. Using the 4) 1-1/4" bolt washer and lock nut sets.
- Make sure the bolt head and washer are recessed into the pad.
- Snug nut to sink bolt and washer into the pad.



Rear view



Front view

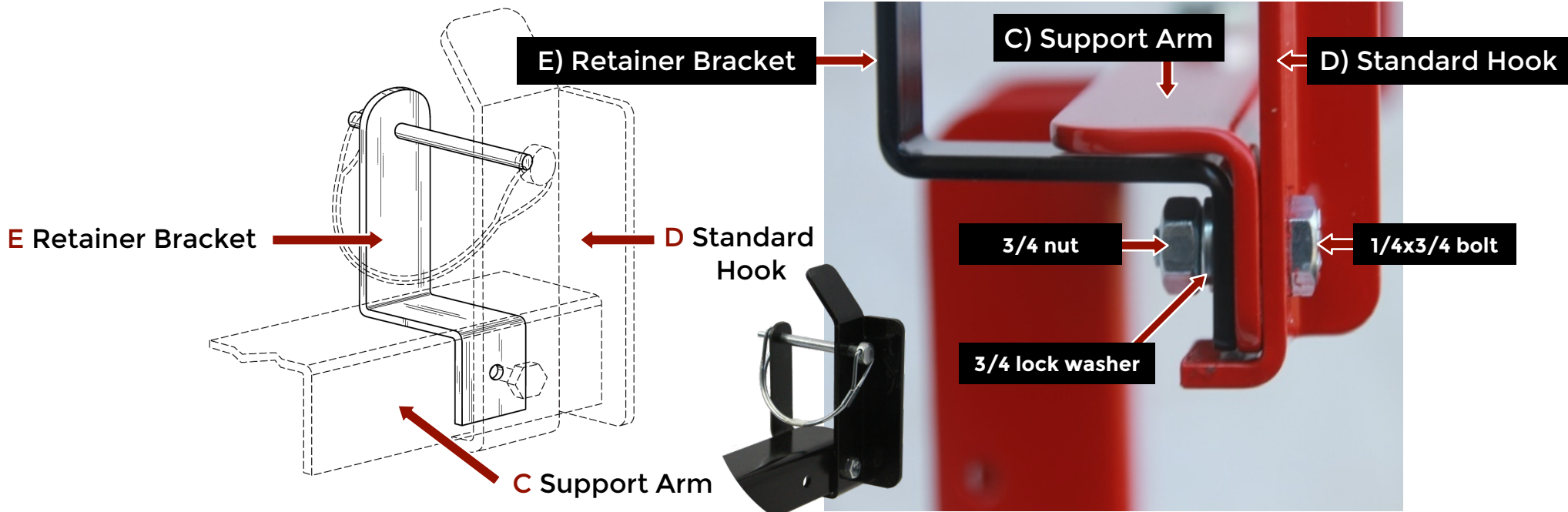


Front Pad (C)

Rear Pad (D)

Step 2

- Mount the two standard hooks and two retainer brackets to each side of the support arm
- There are two hook settings; the outer holes are 12" and the inside hole will be 9"
- Mount the two standard hooks using the 1/4" x 3/4" bolts, lock washers and nuts
- Standard hooks mount on the face of the support arm, the lower tab will wrap under the bottom edge of the support arm
- The rear retainer bracket installs behind and under the support arm
- **NOTE:** Push the retainer bracket tight to the underside so it will stay straight and in line with the hook
- Tighten the bolts so the hooks will not move



E Retainer Bracket

E) Retainer Bracket

D Standard Hook

C Support Arm

C) Support Arm

D) Standard Hook

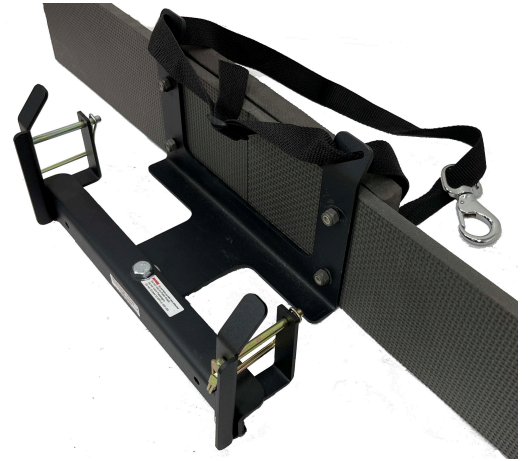
3/4 nut

1/4x3/4 bolt

3/4 lock washer

Step 3

- Assemble the 12" arm on top of the support arm with the 3/8" x 1" bolt and lock nut. Make sure the 3/8" washer is between the two metal pc's. Do not over tighten allow the 12" arm to still swivel.



Step 4

- Once the Bumper Hook is assembled the last step is to adjust the strap to fit your tow vehicle. Hook the swivel clasp to your trunk's lid latch
- Center the pad to the vehicle's bumper by adjusting the ends of the straps. Pull down to take up slack making sure that the clasp is holding and not slipping.
- Once centered, you can cut the excess strap leaving about 4" extra, fold the two ends of the remaining strap onto the other strap
- Use the zip tie to secure the straps together.



The Bumper Hook should now hang from the vehicles trunk latch and be centered. Tip the garbage cans handle over the retainer hooks and secure the cans handle by using the PTO spring clips to insure handle will not slip off during transportation.



When transporting your wheeled cans on steep or challenging grades, we recommend securing the handle using all clips that comes standard with your order.

Spring clip can be bent outward to make fastening easier.



We also offer Ball Hold Down Straps and Quick Release Pins that are easy to apply if the PTOs are hard to use. See our website for more details



Ball Hold Down



Quick Release

Warnings:

- Keep all nuts tightened • Do Not exceed 15 MPH, or 75 lbs. • Do Not carry passengers
 - Do Not use on public roads • Do Not close truck lid all the way
- Turn off vehicle and put in park before attaching your Garbage Hook.

****Garbage Hooks are designed for towing,
DO NOT backup with cans attached. Damage may accrue****

**We suggest height
between 14"- 21" allowing
for approximately 30% of
the cans weight to be
resting on the support arm**

Thank you for your order, as a small company we truly appreciate your business!

If you have any questions or concerns with your order, call or text us at 608-607-2788
Send an email to info@garbagecommander.com

Before leaving a negative review, contact us, we promise to make things right with you.
Help us grow by spreading the word and taking the time to leave a positive review.



Garbage Hooks by:
LaMalco LLC - 2709 N. Burdick Rd. Janesville, WI. 53548
Garbage Hooks are patented and made in the USA.
Patent US 9,789,741 B1 & D888,644S

