

# BRH Bolt-On Receiver Base Installation Instructions v.5.3

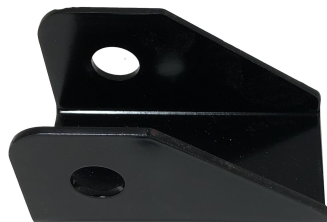
**For use with our SR-MT single can carrier**

**Note:** This will only work with Garbage Commander products

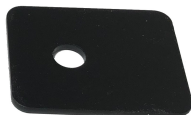
**A** Receiver Base

**B** Support Washer

**C** 7/16" bolt, lock washer & nut



**A**



**B**

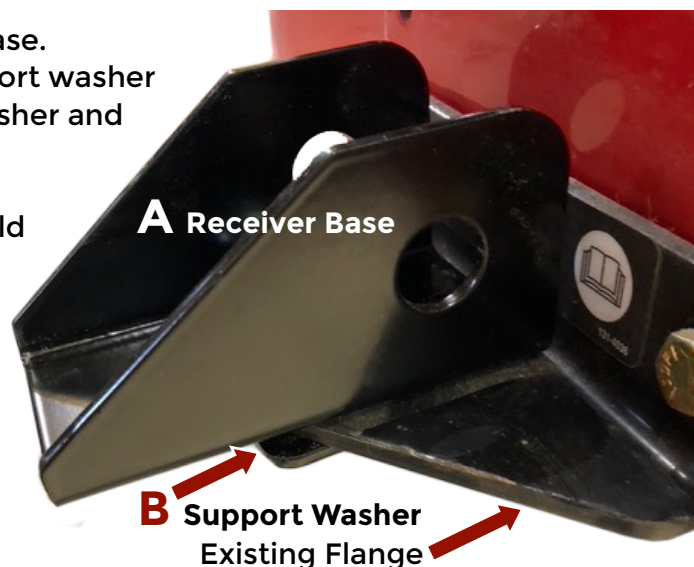
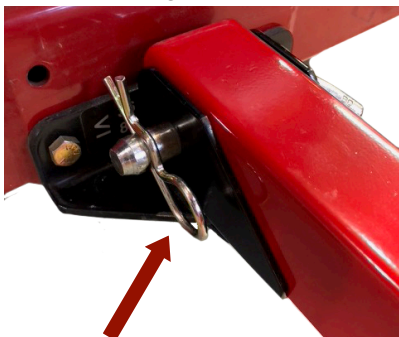


**C**



Scan for  
**BRH Installation Video** >

- Install the 7/16" bolt thru the top hole of the receiver base.
- Next bolt the receiver base to the flange with the support washer to the under side of the flange followed by the lock washer and the nut.
- Aline and tighten.
- Install our SR-MT using a standard 5/8" receiver pin (sold separate)



SR-MT receiver base slips unto the two upright flanges of the installed BRH and pinned in place.

**Note:** Support weight will be determined by the strength of the existing flange, and maybe less than what our SR-MT will support.



We suggest height between 14"-21" allowing for approximately 30% of the cans weight to be resting on the support arm



If you have any questions or concerns with your order, call or text us at 608-607-2788  
Send an email to [info@garbagecommander.com](mailto:info@garbagecommander.com)

Before leaving a negative review, contact us, we promise to make things right with you.  
\*Help us grow by spreading the word and taking the time to leave a positive review.\*



Garbage Hooks by:  
LaMalco LLC - 2709 N. Burdick Rd. Janesville, WI. 53548  
Garbage Hooks are patented and made in the USA.



BRH Bolt-On Receiver Base Installation Instructions v.5.1

For use with our SR-MT single can carrier

Note: This will only work with Garbage Commander products



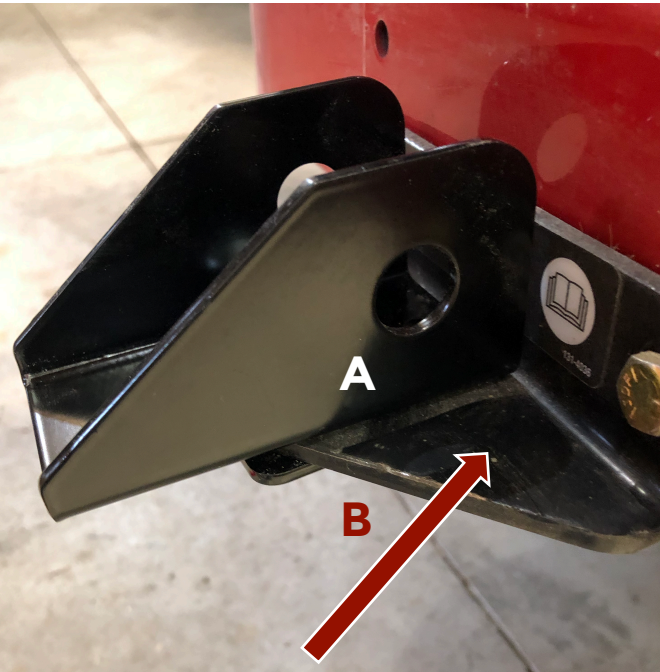
Install the 7/16" bolt thru the top hole of the receiver base. Next bolt the receiver base to the flange with the support washer to the under side of the flange followed by the lock washer and the nut. Aline and tighten.

Note: Support weight will be determined by the strength of the existing flange, and maybe less than what our SR-MT will support.

Install our SR-MT using a standard 5/8" receiver pin (sold separate)



SR-MT receiver base slips unto the two upright flanges of the installed BRH and pinned in place.



Existing Flange to mount the receiver base

We suggest height between 14"- 21" allowing for approximately 30% of the cans weight to be resting on the support arm

If you have any questions or concerns with your order, call or text us at 608-607-2788  
Send an email to [info@lamalco.com](mailto:info@lamalco.com)

Before leaving a negative review, contact us, we promise to make things right with you.  
\*Help us grow by spreading the word and taking the time to leave a positive review.\*



Garbage Hooks by:  
LaMalco LLC - 2709 N. Burdick Rd. Janesville, WI. 53548  
Garbage Hooks are patented and made in the USA.



BRH Bolt-On Receiver Base Installation Instructions v.5.1

For use with our SR-MT single can carrier

Note: This will only work with Garbage Commander products



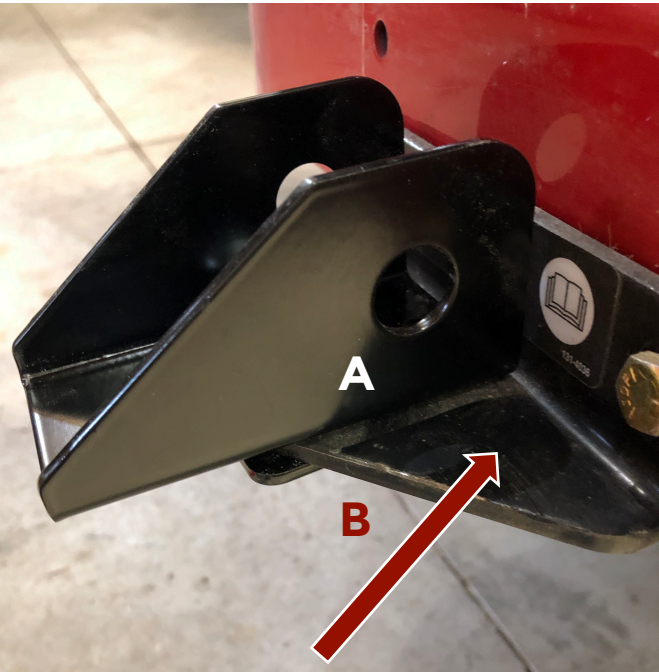
Install the 7/16" bolt thru the top hole of the receiver base. Next bolt the receiver base to the flange with the support washer to the under side of the flange followed by the lock washer and the nut. Aline and tighten.

Note: Support weight will be determined by the strength of the existing flange, and maybe less than what our SR-MT will support.

Install our SR-MT using a standard 5/8" receiver pin (sold separate)



SR-MT receiver base slips unto the two upright flanges of the installed BRH and pinned in place.



Existing Flange to mount the receiver base

We suggest height between 14"- 21" allowing for approximately 30% of the cans weight to be resting on the support arm

If you have any questions or concerns with your order, call or text us at 608-607-2788  
Send an email to [info@lamalco.com](mailto:info@lamalco.com)

Before leaving a negative review, contact us, we promise to make things right with you.  
\*Help us grow by spreading the word and taking the time to leave a positive review.\*



Garbage Hooks by:  
LaMalco LLC - 2709 N. Burdick Rd. Janesville, WI. 53548  
Garbage Hooks are patented and made in the USA.

